

GRADING NOTES (CITY OF TOLLESON):

1. ALL CONSTRUCTION SHALL BE IN ACCORDANCE WITH CURRENT MAG SPECIFICATIONS AND STANDARD DETAILS.

2. A GRADING PERMIT IS REQUIRED.

3. A SEPARATE PERMIT IS NECESSARY FOR ANY OFFSITE CONSTRUCTION.

4. FINISHED FLOOR ELEVATIONS SHOWN ARE A MINIMUM OF 14" ABOVE POINT OF OUTFALL. CARPORT ELEVATION SHALL BE 4" BELOW FINISH FLOOR ELEVATION.

5. DEVELOPER'S ENGINEER SHALL SUBMIT CERTIFICATION OF CONSTRUCTED FINISHED PAD ELEVATIONS PRIOR TO CITY ACCEPTANCE OF PROJECT.

6. STAKING FINISHED FLOOR ELEVATION IS THE RESPONSIBILITY OF THE DEVELOPER AND HIS ENGINEER.

7. CITY OF TOLLESON BUILDING DEPARTMENT TO BE NOTIFIED BEFORE START OF ANY ONSITE CONSTRUCTION. PHONE (623) 936-7111. (24 HOURS ADVANCE NOTICE REQUIRED).

8. AN APPROVED GRADING AND DRAINAGE PLAN SHALL BE KEPT ON THE JOBSITE AT ALL TIMES. DEVIATION FROM THE PLAN MUST BE PRECEDED BY AN APPROVED PLAN REVISION.

9. EXCAVATION CONTRACTORS MUST GIVE LOCATION FOR WASTING EXCESS EXCAVATION AND A LETTER FROM THE OWNER GIVING PERMISSION FOR DUMPING PRIOR TO STARTING ONSITE CONSTRUCTION.

10. NO MINIMUM FINISHED FLOOR ELEVATION SHALL BE ALTERED.

11. CONTRACTOR SHALL PROVIDE LEVEL BOTTOM IN ALL RETENTION BASINS AT ELEVATIONS AS SHOWN ON THE PLANS. RETENTION BASIN SIDE SLOPES SHALL NOT EXCEED 4:1 IN PUBLIC RIGHT-OF-WAY UNLESS NOTED OTHERWISE ON THE PLANS.

12. DISPOSAL OF EXCESS MATERIAL WITHIN THE CITY LIMITS IS PROHIBITED. A USE PERMIT IS REQUIRED FOR DISPOSAL OR STOCKPILING MATERIALS WITHIN A RESIDENTIAL AREA.

13. STOCKPILING OF EXCAVATED MATERIAL SHALL NOT EXCEED A HEIGHT OF SIX (6) FEET ABOVE THE NATURAL GROUND ELEVATION.

14. THE SLOPES ON ALL SIDES OF THE STOCKPILED EXCAVATED MATERIAL SHALL NOT EXCEED A 1 TO 4 RATIO OF HEIGHT TO LENGTH.

15. THE CONTRACTOR SHALL PROVIDE ADEQUATE MEANS FOR CLEANING TRUCKS AND/OR OTHER EQUIPMENT OF MUD PRIOR TO ENTERING PUBLIC STREETS, AND IT IS THE CONTRACTOR'S RESPONSIBILITY TO CLEAN STREETS AND TAKE WHATEVER MEASURES ARE NECESSARY TO ENSURE THAT ALL ROADS ARE MAINTAINED IN A CLEAN, MUD AND DUST FREE CONDITION AT ALL TIMES.

16. THE CONTRACTOR SHALL KEEP SUITABLE EQUIPMENT ON HAND AT THE JOBSITE FOR MAINTAINING DUST CONTROL, AND SHALL CONTROL DUST AS DIRECTED BY THE CITY.

17. ANY AND ALL DAMAGE TO EXISTING PUBLIC IMPROVEMENTS SHALL BE REPAIRED BY THE CONTRACTOR TO THE CITY'S SATISFACTION PRIOR TO ISSUANCE OF FINAL PROJECT ACCEPTANCE.

18. CONSTRUCTION WATER IS AVAILABLE FROM THE CITY OF TOLLESON IN ACCORDANCE WITH THE CITY'S HYDRANT METER ISSUANCE POLICY AND UPON PAYMENT OF APPLICABLE FEES. THE CITY REQUIRES ALL CONSTRUCTION WATER TO BE DELIVERED THROUGH AN APPROVED WATER TOWER WITH AIR-GAP. A WATER TOWER SHALL BE PROVIDED ON OR NEAR THE SITE AT ALL TIMES THAT WATER FOR CONSTRUCTION IS REQUIRED. THE HYDRANT FROM WHICH CONSTRUCTION WATER IS TO BE DELIVERED SHALL BE DETERMINED BY THE CITY. CALL (623) 936-8500 FOR DETAILS.

19. DEVELOPER OR CONTRACTOR SHALL PROVIDE SUFFICIENT STAKING TO ENSURE THAT ALL GRADES ARE ACCURATELY CONSTRUCTED. ANY PORTIONS OF THE PROJECT NOT GRADED PER THE APPROVED PLANS SHALL BE REGRADED AT CONTRACTOR'S EXPENSE.

20. ANY EXISTING CURB, GUTTER OR SIDEWALK LOCATED ALONG THE FRONTAGE OF THIS PROJECT WHICH IS CRACKED OR BROKEN EITHER PRIOR TO OR DURING THE CONSTRUCTION OF THIS PROJECT SHALL BE REPLACED BY THE CONTRACTOR.

21. THE CONTRACTOR SHALL CALL FOR INSPECTION OF EACH CONCRETE HEADWALL DURING FORMING AND SHALL NOT POUR CONCRETE UNTIL HEADWALL IS APPROVED BY CITY INSPECTOR.

22. NO FINAL INSPECTION WALK THROUGH WILL BE SCHEDULED UNTIL "AS-BUILT" PLANS HAVE BEEN SUBMITTED BY THE ENGINEER OR SURVEYOR FOR REVIEW. NO FINAL ACCEPTANCE SHALL BE ISSUED UNTIL "AS-BUILT" PLANS HAVE BEEN REVIEWED AND APPROVED BY THE CITY ENGINEER. UPON APPROVAL, THE OWNER SHALL PROVIDE TO THE CITY ONE SET OF MYLAR REPRODUCIBLE PLANS, TWO BLACKLINE COPIES, AND ONE DIGITAL COPY ON CD IN .TIF FORMAT.

Utility Notification

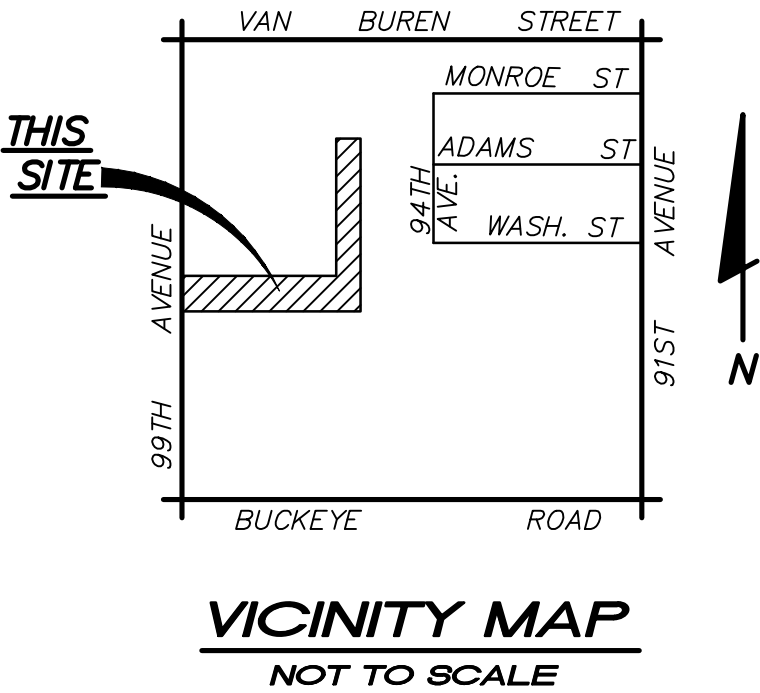
THESE PLANS HAVE BEEN SUBMITTED TO THE FOLLOWING UTILITY COMPANIES. WHERE THE WORK TO BE DONE CONFLICTS WITH ANY OF THESE UTILITIES, THE CONFLICTS SHALL BE RESOLVED AS SPECIFIED IN THE SPECIAL NOTES AND/OR AS OTHERWISE NOTED ON THESE PLANS. CONFLICTS ARISING DURING THE COURSE OF CONSTRUCTION FROM UNFORESEEN CIRCUMSTANCES SHALL BE REPORTED TO THE INTERESTED UTILITY COMPANY AND BE RESOLVED BY THEM AND THE DESIGN ENGINEER.

		CONTACTED	REPLIED
SALT RIVER POWER DISTRICT	SYLVIA ALVARADO	-	-
PHONE NUMBER:	COMPANY REPRESENTATIVE	DATE	DATE
ARIZONA PUBLIC SERVICE	VIRGINIA NISKALA	-	-
PHONE NUMBER:	COMPANY REPRESENTATIVE	DATE	DATE
CENTURY LINK	CONFLICT LIAISON DEPARTMENT	-	-
PHONE NUMBER:	COMPANY REPRESENTATIVE	DATE	DATE
COX COMMUNICATIONS	TRAFFIC MGMT. CENTER-DV64	-	-
PHONE NUMBER:	COMPANY REPRESENTATIVE	DATE	DATE
SOUTHWEST GAS	G. LOPEZ	-	-
PHONE NUMBER:	COMPANY REPRESENTATIVE	DATE	DATE
SALT RIVER IRRIGATION DISTRICT	WATER ENGINEERING (PAB106)	-	-
PHONE NUMBER:	COMPANY REPRESENTATIVE	DATE	DATE
ROOSEVELT IRRIGATION DISTRICT	KEN CRAIG	-	-
PHONE NUMBER:	COMPANY REPRESENTATIVE	DATE	DATE

NOTE:

THESE DRAWINGS ARE AN INSTRUMENT OF SERVICE ONLY AND ARE AND SHALL REMAIN THE EXCLUSIVE PROPERTY OF HESS-ROUNTREE, INC. NO REPRODUCTION OR OTHER USE SHALL BE MADE BY ANY PERSON OR FIRM OTHER THAN HESS-ROUNTREE, INC. OR THE CITY OF TOLLESON WITHOUT EXPRESS PERMISSION OF HESS-ROUNTREE, INC. ANY UNAUTHORIZED USE SHALL VOID THE ENGINEER'S SEAL AND SIGNATURE HEREON AND NO PROFESSIONAL RESPONSIBILITY WILL REMAIN.

PRIVATE ROADWAY AND BUS DROP
AT
TOLLESON DISTRICT OFFICE
9801 W. VAN BUREN STREET
TOLLESON, ARIZONA 85353-2898
PHONE: (623) 478-4200
FOR
TOLLESON UNION HIGH SCHOOL DISTRICT NO. 214
9801 W. VAN BUREN STREET
TOLLESON, ARIZONA 85353-2898
PHONE: (623) 478-4000



OWNER/DEVELOPER:

TOLLESON UNION HIGH SCHOOL DISTRICT NO. 214
9801 W. VAN BUREN STREET
TOLLESON, ARIZONA, 85353-2898

ENGINEER:

HESS-ROUNTREE, INC.
9831 SOUTH 51ST STREET, SUITE C110
PHOENIX AZ, 85044
PHONE: (480) 496-0244
FAX: (480) 496-0094
CONTACT: DOUG OSBORN

SHEET INDEX:

- C-1 COVER SHEET
- C-2 GRADING AND DRAINAGE PLAN
- C-3 GRADING AND DRAINAGE PLAN
- C-4 GRADING AND DRAINAGE PLAN
- C-5 GRADING AND DRAINAGE PLAN
- C-6 GRADING AND DRAINAGE PLAN
- C-7 GRADING AND DRAINAGE PLAN
- C-8 GRADING AND DRAINAGE PLAN

BENCH MARK

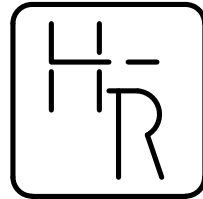
MARICOPA COUNTY HIGHWAY DEPARTMENT 3" BRASS CAP IN HANDHOLE WITH NO STAMPING AT THE INTERSECTION OF 91ST AVENUE AND VAN BUREN STREET.

ELEVATION = 1016.412 (NAVD 88 DATUM)

APPROVAL:

BY: _____ DATE _____
ENGINEERING DEPARTMENT

THE CITY APPROVES THESE PLANS FOR CONCEPT ONLY AND ACCEPTS NO LIABILITY FOR ERRORS OR OMISSIONS



HESS – ROUNTREE, INC.
CONSULTING ENGINEERS & LAND SURVEYORS
9831 SOUTH 51ST STREET, SUITE C110
PHOENIX, ARIZONA 85044 (480)496-0244

DES. **DRO** DRN. **ANM** CKD **DRO** JOB NO. **1708-02**

DESIGN CIVIL ENGINEER'S
NOTES TO CONTRACTOR:

1. NOTHING CONTAINED IN THE CONTRACT DOCUMENTS SHALL CREATE, NOR SHALL BE CONSTRUED TO CREATE, ANY CONTRACTUAL RELATIONSHIP BETWEEN THE DESIGN CIVIL ENGINEER AND THE CONTRACTOR OR ANY SUBCONTRACTOR.

2. THE DESIGN CIVIL ENGINEER WILL NOT BE RESPONSIBLE FOR CONSTRUCTION MEANS, METHODS, TECHNIQUES, SEQUENCES OR PROCEDURES OR FOR SAFETY PRECAUTIONS OR PROGRAMS UTILIZED IN CONNECTION WITH THE WORK, THESE ARE SOLELY THE CONTRACTOR'S RESPONSIBILITY. THE DESIGN CIVIL ENGINEER WILL NOT BE RESPONSIBLE FOR THE CONTRACTOR'S FAILURE TO CARRY OUT THE WORK IN ACCORDANCE WITH THE CONTRACT DOCUMENTS.

3. THE CONTRACTOR SHALL PROVIDE ADEQUATE MEANS OF CLEANING TRUCKS AND/OR OTHER EQUIPMENT OF MUD PRIOR TO ENTERING PUBLIC STREETS, AND IT IS THE CONTRACTOR'S RESPONSIBILITY TO CLEAN STREETS, ALLAY DUST, AND TO TAKE WHATEVER MEASURES ARE NECESSARY TO INSURE THAT ALL ROADWAYS AND ON SITE PARKING LOTS/FIRE LANES ARE MAINTAINED IN A CLEAN, MUD AND DUST-FREE CONDITION AT ALL TIMES.

4. IT SHALL BE THE CONTRACTOR'S RESPONSIBILITY TO CONTACT THE BLUE STAKE CENTER TWO WORKING DAYS PRIOR TO ANY EXCAVATION. THE UNDERGROUND UTILITY LOCATIONS AS SHOWN HEREON ARE BASED ON THE BEST INFORMATION AVAILABLE FROM UTILITY RECORDS AND OTHER DATA AS SUPPLIED TO THIS DESIGN CIVIL ENGINEER. THERE MAY BE OTHER UNDERGROUND UTILITY LINES, SERVICE LINES AND STRUCTURES PRESENT IN THE SUBJECT AREA. CONTRACTOR SHALL INCLUDE IN HIS BID THE COST OF HIRING AN UNDERGROUND UTILITY LOCATING SERVICE FOR THE PURPOSE OF LOCATING ALL UNDERGROUND UTILITIES. CONTRACTOR WILL COORDINATE WITH THE OWNER AND ARCHITECT TO DETERMINE WHETHER SAID UTILITIES ARE TO BE ABANDONED OR PROTECTED FROM DAMAGE.

5. THE DESIGN CIVIL ENGINEER MAKES NO REPRESENTATION OR GUARANTEE REGARDING THE EARTHWORK QUANTITIES OR THAT THE EARTHWORK FOR THIS PROJECT WILL BALANCE DUE TO THE VARYING FIELD CONDITIONS, CHANGING, SOIL TYPES, ALLOWABLE CONSTRUCTION TOLERANCES AND CONSTRUCTION METHODS. PRIOR TO BIDDING THE WORK, THE CONTRACTOR SHALL THOROUGHLY SATISFY HIMSELF AS TO THE ACTUAL CONDITIONS, EARTHWORK QUANTITIES AND REQUIREMENTS OF THE WORK AND EXCESS OR DEFICIENCY THEREIN, ACTUAL OR RELATIVE.

6. THE CONTRACTOR SHALL ADJUST ALL EXISTING AND NEW CLEANOUTS, WATER VALVE BOXES, MANHOLES, GAS VALVE BOXES, IRRIGATION BOXES, ETC. IN THE CONSTRUCTION AREA TO FINISH GRADE PER THE APPLICABLE MAG STANDARD DETAIL. ALL VALVE BOXES, MANHOLES, ETC. IN CONCRETE PAVEMENT AREAS SHALL BE ISOLATED FROM THE CONCRETE PAVEMENT WITH EXPANSION JOINTS.

7. ALL NEW UNDERGROUND FACILITIES/UTILITIES SHALL BE INSTALLED WITH A DETECTABLE UNDERGROUND LOCATION DEVICE. INSTALL A #18 INSULATED TRACER WIRE SECURELY ATTACHED TO EACH UTILITY AT 8-FEET ON CENTER. 12" OF TRACER WIRE SHALL BE ACCESSIBLE ABOVE GRADE AT THE TERMINATION AND SHALL BE SECURELY ATTACHED AT THAT POINT. THE CONTRACTOR SHALL INCLUDE ALL COSTS ASSOCIATED WITH THIS REQUIREMENT IN THEIR BID.

8. THE CONTRACTOR SHALL MAKE NO CLAIMS AGAINST THE OWNER OR THE DESIGN CIVIL ENGINEER REGARDING ALLEGED INACCURACY OF CONSTRUCTION STAKES SET BY THE DESIGN CIVIL ENGINEER UNLESS ALL SURVEY STAKES SET BY THE DESIGN CIVIL ENGINEER ARE MAINTAINED INTACT AND CANNOT BE VERIFIED AS TO THEIR ORIGIN, ANY REMEDIAL WORK REQUIRED TO CORRECT ANY ITEM OF IMPROPER CONSTRUCTION WORK IN THIS DEVELOPMENT SHALL BE PERFORMED AT THE SOLE EXPENSE OF THE RESPONSIBLE CONTRACTOR OR SUBCONTRACTOR.

9. ALL NEW PRIVATE UNDERGROUND UTILITIES (WATER LINES 3" AND LARGER, SEWER LINES, FIRE LINES AND STORM DRAIN LINES SHALL BE BEDDED WITH A.B.C., PER MAG SECTION 702, FROM 4" (MIN.) BELOW THE BOTTOM OF THE PIPE TO 12" (MIN.) ABOVE THE TOP OF THE PIPE.

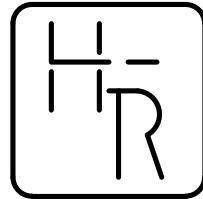
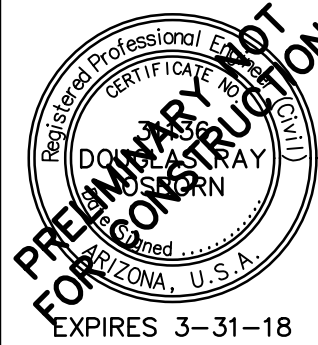
TOLLESON UNION HIGH SCHOOL DISTRICT

PRIVATE ROADWAY AND BUS DROP

DRAWING STATUS	SHEET	OF	
80% SET			
DATE: 01-30-18	1	8	C-1



170802B001.DWG

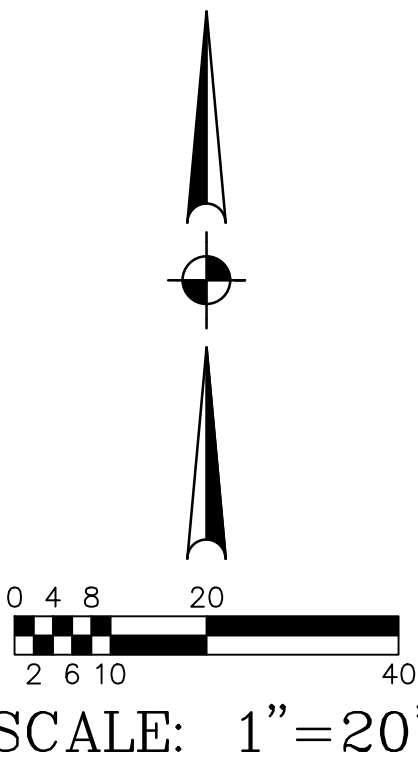
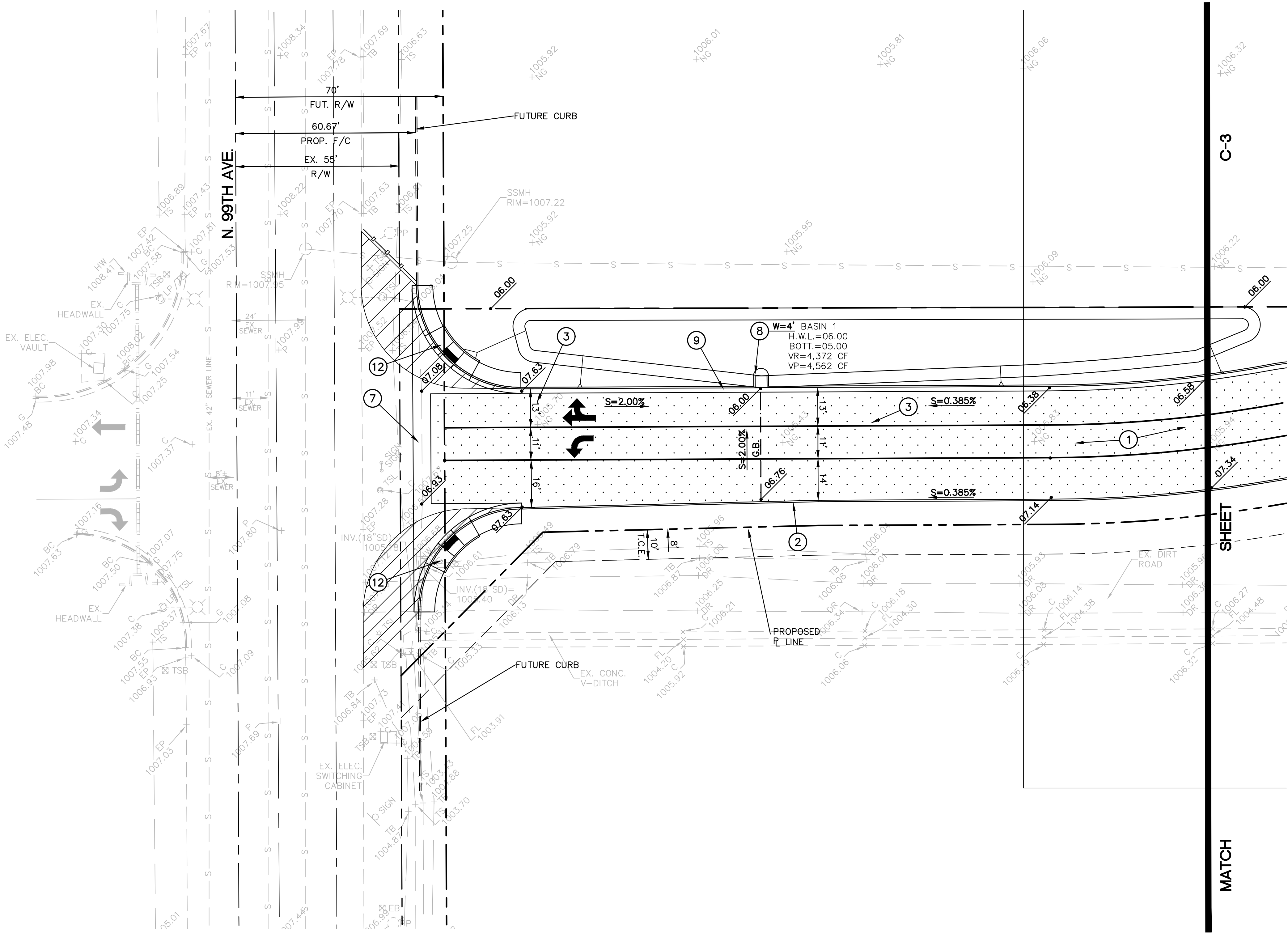


HESS — ROUNTREE, INC.
CONSULTING ENGINEERS & LAND SURVEYORS
9831 SOUTH 51ST STREET, SUITE C110
PHOENIX, ARIZONA 85044 (480)496-0244

DES. **DRO** DRN. **ANM** CKD **DRO** JOB NO. **1708-02**

GRADING AND DRAINAGE CONSTRUCTION NOTES:

1. INSTALL ASPHALTIC CONCRETE PAVEMENT (3" A.C. (3/4" MARSHALL MIX) OVER 8" A.B.C. OVER COMPACTED SUBGRADE.
2. CONSTRUCT CONCRETE SINGLE CURB (MAG STANDARD DETAIL NO. 222, TYPE A).
3. PAINT STRIPE TO THE ALIGNMENTS INDICATED, INCLUDING ALL WALKWAYS, DROP-OFF AREAS, ETC. (TYPICAL).
4. SAWCUT, REMOVE AND REPLACE (1' MINIMUM) A.C. PAVEMENT IN KIND FOR A NEAT, CLEAN EDGE FOR MATCHING.
5. INSTALL THICKENED PAVEMENT EDGE (MAG STANDARD DETAIL NO. 201, TYPE B).
6. ADJUST MANHOLE COVER, CATCH BASIN, ETC., TO FINISH GRADE (MAG STANDARD DETAIL NO. 422, SEE DETAIL ON SHEET C-X).
7. CONSTRUCT CONCRETE VALLEY GUTTER AND APRON (MAG STANDARD DETAIL NO. 240).
8. CONSTRUCT CONCRETE SPLASHPAD (SEE DETAIL ON SHEET C-X, WIDTH PER PLAN).
9. CONSTRUCT CONCRETE VERTICAL CURB AND GUTTER (MAG STANDARD DETAIL NO. 220-1, TYPE A).
10. INSTALL 5' HIGH CHAIN LINK FENCE.
11. INSTALL BARRICADE (MAG STANDARD DETAIL NUMBER 130, TYPE 'A').
12. INSTALL SIDEWALK RAMP (MAG STANDARD DETAIL 235-3).
13. INSTALL H.D.P.E. PIPE WITH SMOOTH INTERIOR AND 10.8 PSI JOINTS.
14. REMOVE AND SALVAGE EXISTING AUTOMATIC GATE AND OPENER. REINSTALL IN LOCATION INDICATED.
15. CONSTRUCT CMU BLOCK WALL WITH WROUGHT IRON FENCE.
16. INSTALL 30' WIDE CHAIN LINK DOUBLE SWING GATE.
17. CANOPY AND CONNEX TO BE RELOCATED TO LOCATION INDICATED.
18. CMU BLOCK WALL TO BE REMOVED.
19. CONSTRUCT CONCRETE STRUCTURE (SEE STRUCTURAL DRAWINGS FOR DETAILS).
20. INSTALL CONCRETE SIDEWALK (MAG STANDARD DETAIL NO. 230).



GRADING AND DRAINAGE PLANS

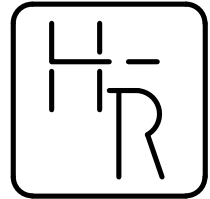
TOLLESON UNION HIGH SCHOOL DISTRICT

PRIVATE ROADWAY AND BUS DROP

DRAWING STATUS	SHEET	OF	C-2
80% SET			
	2	8	
DATE: 01-30-18			



170802C2.DWG

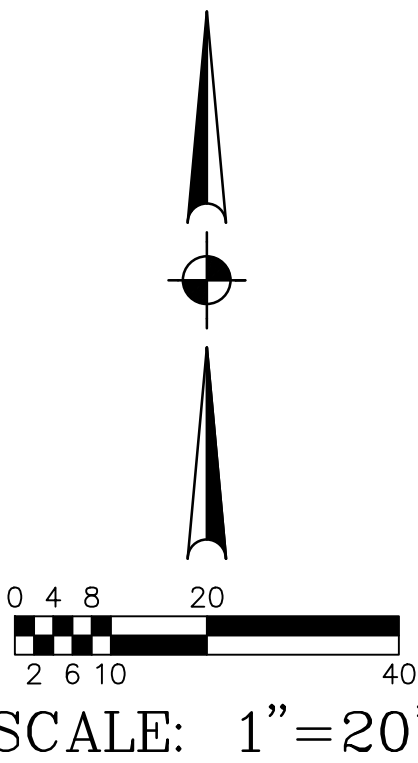


HESS - ROUNTREE, INC.
CONSULTING ENGINEERS & LAND SURVEYORS
9831 SOUTH 51ST STREET, SUITE C110
PHOENIX, ARIZONA 85044 (480)496-0244

DES. **DRO** DRN. **ANM** CKD **DRO** JOB NO. **1708-02**

GRADING AND DRAINAGE CONSTRUCTION NOTES:

1. INSTALL ASPHALTIC CONCRETE PAVEMENT (3" A.C. (3/4" MARSHALL MIX) OVER 8" A.B.C. OVER COMPACTED SUBGRADE.
2. CONSTRUCT CONCRETE SINGLE CURB (MAG STANDARD DETAIL NO. 222, TYPE A).
3. PAINT STRIPE TO THE ALIGNMENTS INDICATED, INCLUDING ALL WALKWAYS, DROP-OFF AREAS, ETC. (TYPICAL).
4. SAWCUT, REMOVE AND REPLACE (1' MINIMUM) A.C. PAVEMENT IN KIND FOR A NEAT, CLEAN EDGE FOR MATCHING.
5. INSTALL THICKENED PAVEMENT EDGE (MAG STANDARD DETAIL NO. 201, TYPE B).
6. ADJUST MANHOLE COVER, CATCH BASIN, ETC., TO FINISH GRADE (MAG STANDARD DETAIL NO. 422, SEE DETAIL ON SHEET C-X).
7. CONSTRUCT CONCRETE VALLEY GUTTER AND APRON (MAG STANDARD DETAIL NO. 240).
8. CONSTRUCT CONCRETE SPLASHPAD (SEE DETAIL ON SHEET C-X, WIDTH PER PLAN).
9. CONSTRUCT CONCRETE VERTICAL CURB AND GUTTER (MAG STANDARD DETAIL NO. 220-1, TYPE A).
10. INSTALL 5' HIGH CHAIN LINK FENCE.
11. INSTALL BARRICADE (MAG STANDARD DETAIL NUMBER 130, TYPE 'A').
12. INSTALL SIDEWALK RAMP (MAG STANDARD DETAIL 235-3).
13. INSTALL H.D.P.E. PIPE WITH SMOOTH INTERIOR AND 10.8 PSI JOINTS.
14. REMOVE AND SALVAGE EXISTING AUTOMATIC GATE AND OPENER. REINSTALL IN LOCATION INDICATED.
15. CONSTRUCT CMU BLOCK WALL WITH WROUGHT IRON FENCE.
16. INSTALL 30' WIDE CHAIN LINK DOUBLE SWING GATE.
17. CANOPY AND CONNEX TO BE RELOCATED TO LOCATION INDICATED.
18. CMU BLOCK WALL TO BE REMOVED.
19. CONSTRUCT CONCRETE STRUCTURE (SEE STRUCTURAL DRAWINGS FOR DETAILS).
20. INSTALL CONCRETE SIDEWALK (MAG STANDARD DETAIL NO. 230).



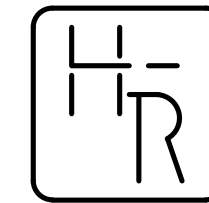
GRADING AND DRAINAGE PLANS

TOLLESON UNION HIGH SCHOOL DISTRICT

PRIVATE ROADWAY AND BUS DROP

DRAWING STATUS	SHEET	OF	
80% SET			
	3	8	C-3
DATE:	01-30-18		



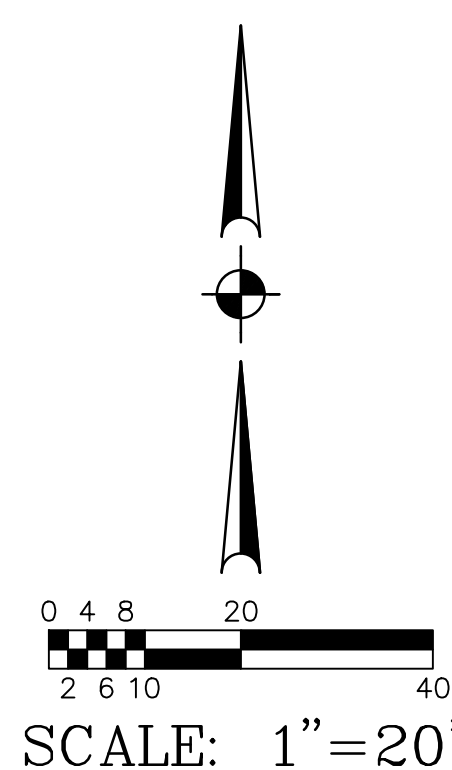


HESS - ROUNTREE, INC.
CONSULTING ENGINEERS & LAND SURVEYORS
9831 SOUTH 51ST STREET, SUITE C110
PHOENIX, ARIZONA 85044 (480)496-0244

DES. **DRO** DRN. **ANM** CKD **DRO** JOB NO. **1708-02**

GRADING AND DRAINAGE CONSTRUCTION NOTES:

1. INSTALL ASPHALTIC CONCRETE PAVEMENT (3" A.C. (3/4" MARSHALL MIX) OVER 8" A.B.C. OVER COMPACTED SUBGRADE.
2. CONSTRUCT CONCRETE SINGLE CURB (MAG STANDARD DETAIL NO. 222, TYPE A).
3. PAINT STRIPE TO THE ALIGNMENTS INDICATED, INCLUDING ALL WALKWAYS, DROP-OFF AREAS, ETC. (TYPICAL).
4. SAWCUT, REMOVE AND REPLACE (1' MINIMUM) A.C. PAVEMENT IN KIND FOR A NEAT, CLEAN EDGE FOR MATCHING.
5. INSTALL THICKENED PAVEMENT EDGE (MAG STANDARD DETAIL NO. 201, TYPE B).
6. ADJUST MANHOLE COVER, CATCH BASIN, ETC., TO FINISH GRADE (MAG STANDARD DETAIL NO. 422, SEE DETAIL ON SHEET C-X).
7. CONSTRUCT CONCRETE VALLEY GUTTER AND APRON (MAG STANDARD DETAIL NO. 240).
8. CONSTRUCT CONCRETE SPLASHPAD (SEE DETAIL ON SHEET C-X, WIDTH PER PLAN).
9. CONSTRUCT CONCRETE VERTICAL CURB AND GUTTER (MAG STANDARD DETAIL NO. 220-1, TYPE A).
10. INSTALL 5' HIGH CHAIN LINK FENCE.
11. INSTALL BARRICADE (MAG STANDARD DETAIL NUMBER 130, TYPE 'A').
12. INSTALL SIDEWALK RAMP (MAG STANDARD DETAIL 235-3).
13. INSTALL H.D.P.E. PIPE WITH SMOOTH INTERIOR AND 10.8 PSI JOINTS.
14. REMOVE AND SALVAGE EXISTING AUTOMATIC GATE AND OPENER. REINSTALL IN LOCATION INDICATED.
15. CONSTRUCT CMU BLOCK WALL WITH WROUGHT IRON FENCE.
16. INSTALL 30' WIDE CHAIN LINK DOUBLE SWING GATE.
17. CANOPY AND CONNEX TO BE RELOCATED TO LOCATION INDICATED.
18. CMU BLOCK WALL TO BE REMOVED.
19. CONSTRUCT CONCRETE STRUCTURE (SEE STRUCTURAL DRAWINGS FOR DETAILS).
20. INSTALL CONCRETE SIDEWALK (MAG STANDARD DETAIL NO. 230).

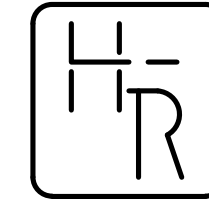


TOLLESON UNION HIGH SCHOOL DISTRICT

PRIVATE ROADWAY AND BUS DROP

DRAWING STATUS	SHEET	OF	
80% SET			
	4	8	C-4
DATE:	01-30-18		



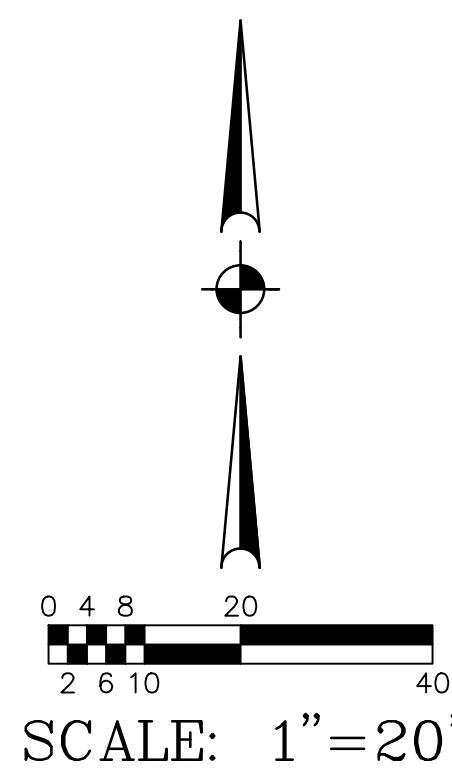
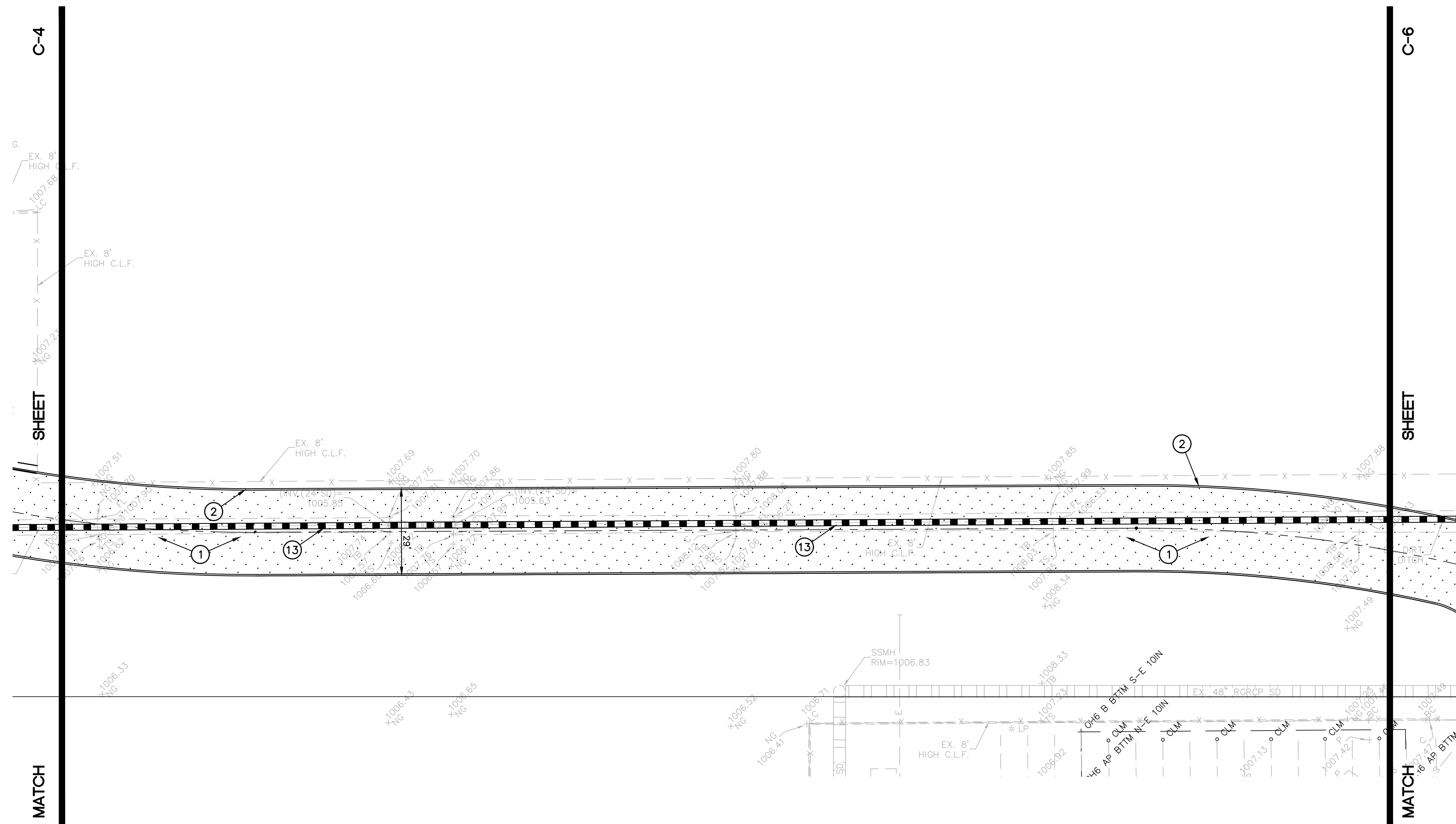


HESS - ROUNTREE, INC.
CONSULTING ENGINEERS & LAND SURVEYORS
9831 SOUTH 51ST STREET, SUITE C110
PHOENIX, ARIZONA 85044 (480)496-0244

DES. DRO	DRN. ANM	CKD. DRO	JOB NO. 1708-02
-----------------	-----------------	-----------------	------------------------

GRADING AND DRAINAGE CONSTRUCTION NOTES:

- 1 INSTALL ASPHALTIC CONCRETE PAVEMENT (3" A.C. (3/4" MARSHALL MIX) OVER 8" A.B.C. OVER COMPACTED SUBGRADE.
- 2 CONSTRUCT CONCRETE SINGLE CURB (MAG STANDARD DETAIL NO. 222, TYPE A).
- 3 PAINT STRIPE TO THE ALIGNMENTS INDICATED, INCLUDING ALL WALKWAYS, DROP-OFF AREAS, ETC. (TYPICAL).
- 4 SAWCUT, REMOVE AND REPLACE (1' MINIMUM) A.C. PAVEMENT IN KIND FOR A NEAT, CLEAN EDGE FOR MATCHING.
- 5 INSTALL THICKENED PAVEMENT EDGE (MAG STANDARD DETAIL NO. 201, TYPE B).
- 6 ADJUST MANHOLE COVER, CATCH BASIN, ETC., TO FINISH GRADE (MAG STANDARD DETAIL NO. 422, SEE DETAIL ON SHEET C-X).
- 7 CONSTRUCT CONCRETE VALLEY GUTTER AND APRON (MAG STANDARD DETAIL NO. 240).
- 8 CONSTRUCT CONCRETE SPLASHPAD (SEE DETAIL ON SHEET C-X, WIDTH PER PLAN).
- 9 CONSTRUCT CONCRETE VERTICAL CURB AND GUTTER (MAG STANDARD DETAIL NO. 220-1, TYPE A).
- 10 INSTALL 5' HIGH CHAIN LINK FENCE.
- 11 INSTALL BARRICADE (MAG STANDARD DETAIL NUMBER 130, TYPE 'A').
- 12 INSTALL SIDEWALK RAMP (MAG STANDARD DETAIL 235-3).
- 13 INSTALL H.D.P.E. PIPE WITH SMOOTH INTERIOR AND 10.8 PSI JOINTS.
- 14 REMOVE AND SALVAGE EXISTING AUTOMATIC GATE AND OPENER. REINSTALL IN LOCATION INDICATED.
- 15 CONSTRUCT CMU BLOCK WALL WITH WROUGHT IRON FENCE.
- 16 INSTALL 30' WIDE CHAIN LINK DOUBLE SWING GATE.
- 17 CANOPY AND CONNEX TO BE RELOCATED TO LOCATION INDICATED.
- 18 CMU BLOCK WALL TO BE REMOVED.
- 19 CONSTRUCT CONCRETE STRUCTURE (SEE STRUCTURAL DRAWINGS FOR DETAILS).
- 20 INSTALL CONCRETE SIDEWALK (MAG STANDARD DETAIL NO. 230).



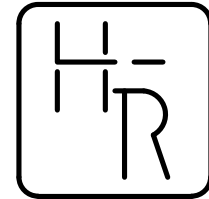
TOLLESON UNION HIGH SCHOOL DISTRICT

PRIVATE ROADWAY AND BUS DROP

DRAWING STATUS	SHEET	OF	C-5
80% SET			
DATE: 01-30-18			



170802GR5.DWG

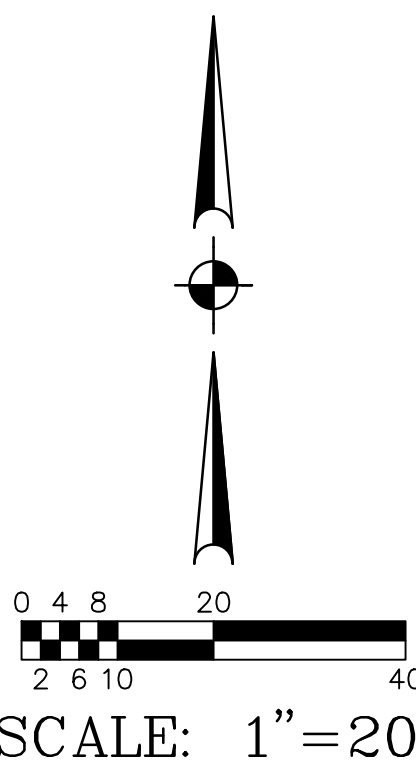


HESS - ROUNTREE, INC.
CONSULTING ENGINEERS & LAND SURVEYORS
9831 SOUTH 51ST STREET, SUITE C110
PHOENIX, ARIZONA 85044 (480)496-0244

DES. **DRO** DRN. **ANM** CKD **DRO** JOB NO. **1708-02**

GRADING AND DRAINAGE CONSTRUCTION NOTES:

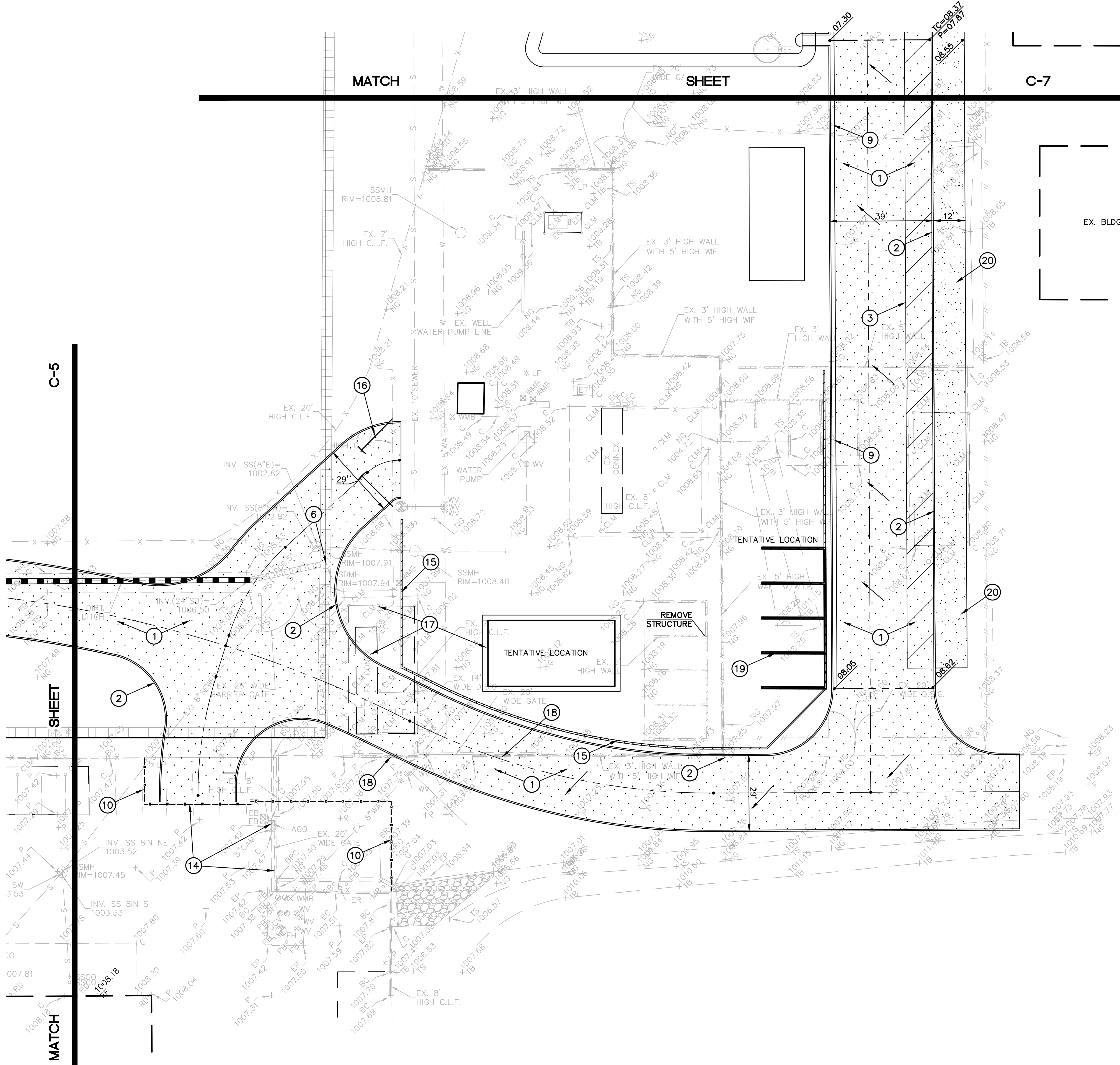
1. INSTALL ASPHALTIC CONCRETE PAVEMENT (3" A.C. (3/4" MARSHALL MIX) OVER 8" A.B.C. OVER COMPACTED SUBGRADE.
2. CONSTRUCT CONCRETE SINGLE CURB (MAG STANDARD DETAIL NO. 222, TYPE A).
3. PAINT STRIPE TO THE ALIGNMENTS INDICATED, INCLUDING ALL WALKWAYS, DROP-OFF AREAS, ETC. (TYPICAL).
4. SAWCUT, REMOVE AND REPLACE (1' MINIMUM) A.C. PAVEMENT IN KIND FOR A NEAT, CLEAN EDGE FOR MATCHING.
5. INSTALL THICKENED PAVEMENT EDGE (MAG STANDARD DETAIL NO. 201, TYPE B).
6. ADJUST MANHOLE COVER, CATCH BASIN, ETC., TO FINISH GRADE (MAG STANDARD DETAIL NO. 422, SEE DETAIL ON SHEET C-X).
7. CONSTRUCT CONCRETE VALLEY GUTTER AND APRON (MAG STANDARD DETAIL NO. 240).
8. CONSTRUCT CONCRETE SPLASHPAD (SEE DETAIL ON SHEET C-X, WIDTH PER PLAN).
9. CONSTRUCT CONCRETE VERTICAL CURB AND GUTTER (MAG STANDARD DETAIL NO. 220-1, TYPE A).
10. INSTALL 5' HIGH CHAIN LINK FENCE.
11. INSTALL BARRICADE (MAG STANDARD DETAIL NUMBER 130, TYPE 'A').
12. INSTALL SIDEWALK RAMP (MAG STANDARD DETAIL 235-3).
13. INSTALL H.D.P.E. PIPE WITH SMOOTH INTERIOR AND 10.8 PSI JOINTS.
14. REMOVE AND SALVAGE EXISTING AUTOMATIC GATE AND OPENER. REINSTALL IN LOCATION INDICATED.
15. CONSTRUCT CMU BLOCK WALL WITH WROUGHT IRON FENCE.
16. INSTALL 30' WIDE CHAIN LINK DOUBLE SWING GATE.
17. CANOPY AND CONNEX TO BE RELOCATED TO LOCATION INDICATED.
18. CMU BLOCK WALL TO BE REMOVED.
19. CONSTRUCT CONCRETE STRUCTURE (SEE STRUCTURAL DRAWINGS FOR DETAILS).
20. INSTALL CONCRETE SIDEWALK (MAG STANDARD DETAIL NO. 230).

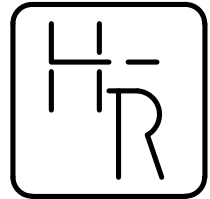
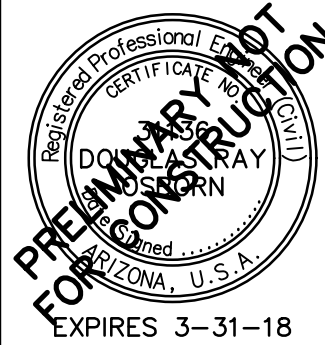


TOLLESON UNION HIGH SCHOOL DISTRICT

PRIVATE ROADWAY AND BUS DROP

DRAWING STATUS	SHEET	OF	
80% SET			
	6	8	C-6
DATE:	01-30-18		



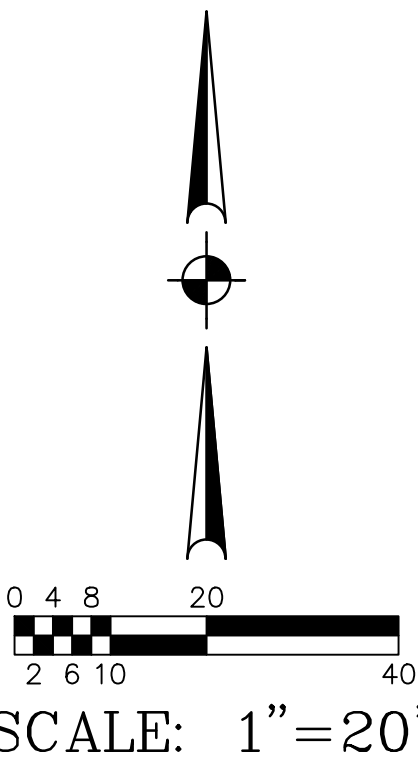


HESS - ROUNTREE, INC.
CONSULTING ENGINEERS & LAND SURVEYORS
9831 SOUTH 51ST STREET, SUITE C110
PHOENIX, ARIZONA 85044 (480)496-0244

DES. **DRO** DRN. **ANM** CKD **DRO** JOB NO. **1708-02**

GRADING AND DRAINAGE CONSTRUCTION NOTES:

1. INSTALL ASPHALTIC CONCRETE PAVEMENT (3" A.C. (3/4" MARSHALL MIX) OVER 8" A.B.C. OVER COMPACTED SUBGRADE.
2. CONSTRUCT CONCRETE SINGLE CURB (MAG STANDARD DETAIL NO. 222, TYPE A).
3. PAINT STRIPE TO THE ALIGNMENTS INDICATED, INCLUDING ALL WALKWAYS, DROP-OFF AREAS, ETC. (TYPICAL).
4. SAWCUT, REMOVE AND REPLACE (1" MINIMUM) A.C. PAVEMENT IN KIND FOR A NEAT, CLEAN EDGE FOR MATCHING.
5. INSTALL THICKENED PAVEMENT EDGE (MAG STANDARD DETAIL NO. 201, TYPE B).
6. ADJUST MANHOLE COVER, CATCH BASIN, ETC., TO FINISH GRADE (MAG STANDARD DETAIL NO. 422, SEE DETAIL ON SHEET C-X).
7. CONSTRUCT CONCRETE VALLEY GUTTER AND APRON (MAG STANDARD DETAIL NO. 240).
8. CONSTRUCT CONCRETE SPLASHPAD (SEE DETAIL ON SHEET C-X, WIDTH PER PLAN).
9. CONSTRUCT CONCRETE VERTICAL CURB AND GUTTER (MAG STANDARD DETAIL NO. 220-1, TYPE A).
10. INSTALL 5' HIGH CHAIN LINK FENCE.
11. INSTALL BARRICADE (MAG STANDARD DETAIL NUMBER 130, TYPE 'A').
12. INSTALL SIDEWALK RAMP (MAG STANDARD DETAIL 235-3).
13. INSTALL H.D.P.E. PIPE WITH SMOOTH INTERIOR AND 10.8 PSI JOINTS.
14. REMOVE AND SALVAGE EXISTING AUTOMATIC GATE AND OPENER. REINSTALL IN LOCATION INDICATED.
15. CONSTRUCT CMU BLOCK WALL WITH WROUGHT IRON FENCE.
16. INSTALL 30' WIDE CHAIN LINK DOUBLE SWING GATE.
17. CANOPY AND CONNEX TO BE RELOCATED TO LOCATION INDICATED.
18. CMU BLOCK WALL TO BE REMOVED.
19. CONSTRUCT CONCRETE STRUCTURE (SEE STRUCTURAL DRAWINGS FOR DETAILS).
20. INSTALL CONCRETE SIDEWALK (MAG STANDARD DETAIL NO. 230).

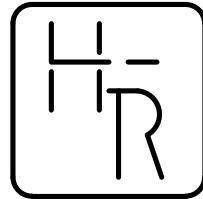
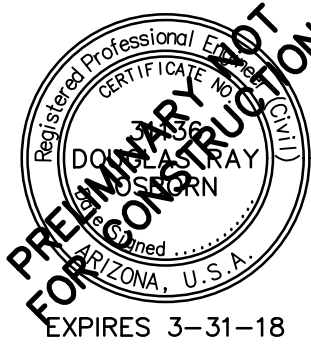


TOLLESON UNION HIGH SCHOOL DISTRICT

PRIVATE ROADWAY AND BUS DROP

DRAWING STATUS	SHEET	OF	
80% SET			
	7	8	C-7
DATE:	01-30-18		



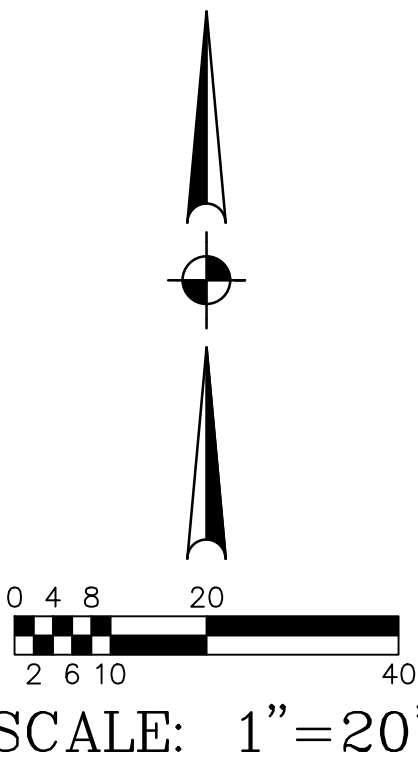
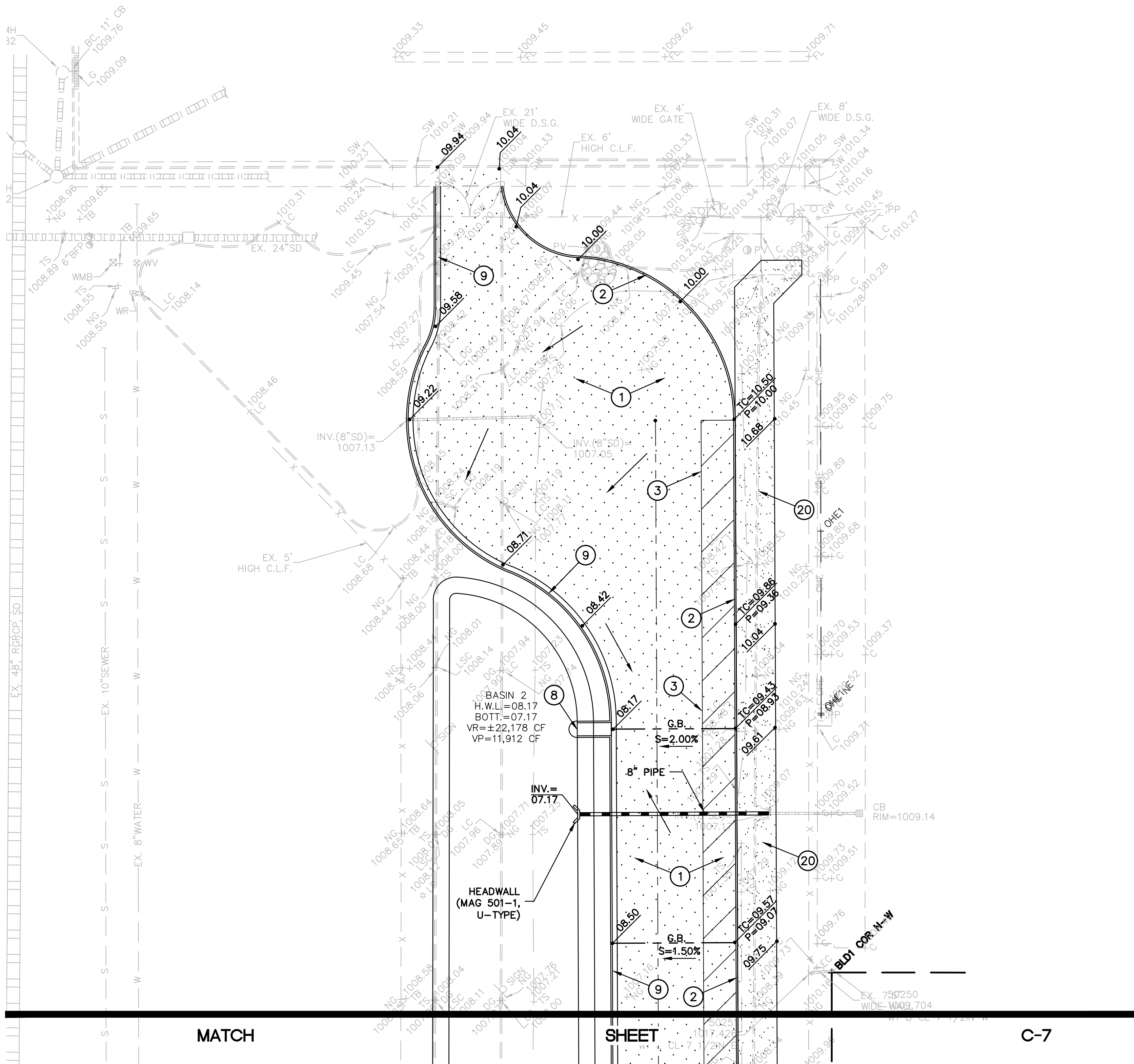


HESS - ROUNTREE, INC.
CONSULTING ENGINEERS & LAND SURVEYORS
9831 SOUTH 51ST STREET, SUITE C110
PHOENIX, ARIZONA 85044 (480)496-0244

DES. **DRO** DRN. **ANM** CKD **DRO** JOB NO. **1708-02**

GRADING AND DRAINAGE CONSTRUCTION NOTES:

1. INSTALL ASPHALTIC CONCRETE PAVEMENT (3" A.C. (3/4" MARSHALL MIX) OVER 8" A.B.C. OVER COMPACTED SUBGRADE.
2. CONSTRUCT CONCRETE SINGLE CURB (MAG STANDARD DETAIL NO. 222, TYPE A).
3. PAINT STRIPE TO THE ALIGNMENTS INDICATED, INCLUDING ALL WALKWAYS, DROP-OFF AREAS, ETC. (TYPICAL).
4. SAWCUT, REMOVE AND REPLACE (1' MINIMUM) A.C. PAVEMENT IN KIND FOR A NEAT, CLEAN EDGE FOR MATCHING.
5. INSTALL THICKENED PAVEMENT EDGE (MAG STANDARD DETAIL NO. 201, TYPE B).
6. ADJUST MANHOLE COVER, CATCH BASIN, ETC., TO FINISH GRADE (MAG STANDARD DETAIL NO. 422, SEE DETAIL ON SHEET C-X).
7. CONSTRUCT CONCRETE VALLEY GUTTER AND APRON (MAG STANDARD DETAIL NO. 240).
8. CONSTRUCT CONCRETE SPLASHPAD (SEE DETAIL ON SHEET C-X, WIDTH PER PLAN).
9. CONSTRUCT CONCRETE VERTICAL CURB AND GUTTER (MAG STANDARD DETAIL NO. 220-1, TYPE A).
10. INSTALL 5' HIGH CHAIN LINK FENCE.
11. INSTALL BARRICADE (MAG STANDARD DETAIL NUMBER 130, TYPE 'A').
12. INSTALL SIDEWALK RAMP (MAG STANDARD DETAIL 235-3).
13. INSTALL H.D.P.E. PIPE WITH SMOOTH INTERIOR AND 10.8 PSI JOINTS.
14. REMOVE AND SALVAGE EXISTING AUTOMATIC GATE AND OPENER. REINSTALL IN LOCATION INDICATED.
15. CONSTRUCT CMU BLOCK WALL WITH WROUGHT IRON FENCE.
16. INSTALL 30' WIDE CHAIN LINK DOUBLE SWING GATE.
17. CANOPY AND CONNEX TO BE RELOCATED TO LOCATION INDICATED.
18. CMU BLOCK WALL TO BE REMOVED.
19. CONSTRUCT CONCRETE STRUCTURE (SEE STRUCTURAL DRAWINGS FOR DETAILS).
20. INSTALL CONCRETE SIDEWALK (MAG STANDARD DETAIL NO. 230).



TOLLESON UNION HIGH SCHOOL DISTRICT			
PRIVATE ROADWAY AND BUS DROP			
DRAWING STATUS	SHEET	OF	C-8
80% SET			
	8	8	
DATE:	01-30-18		



170802C08.DWG